

Serving Big Timber & Sweet Grass County, Montana

Vol. 115, No. 6 - December 5-11, 2003

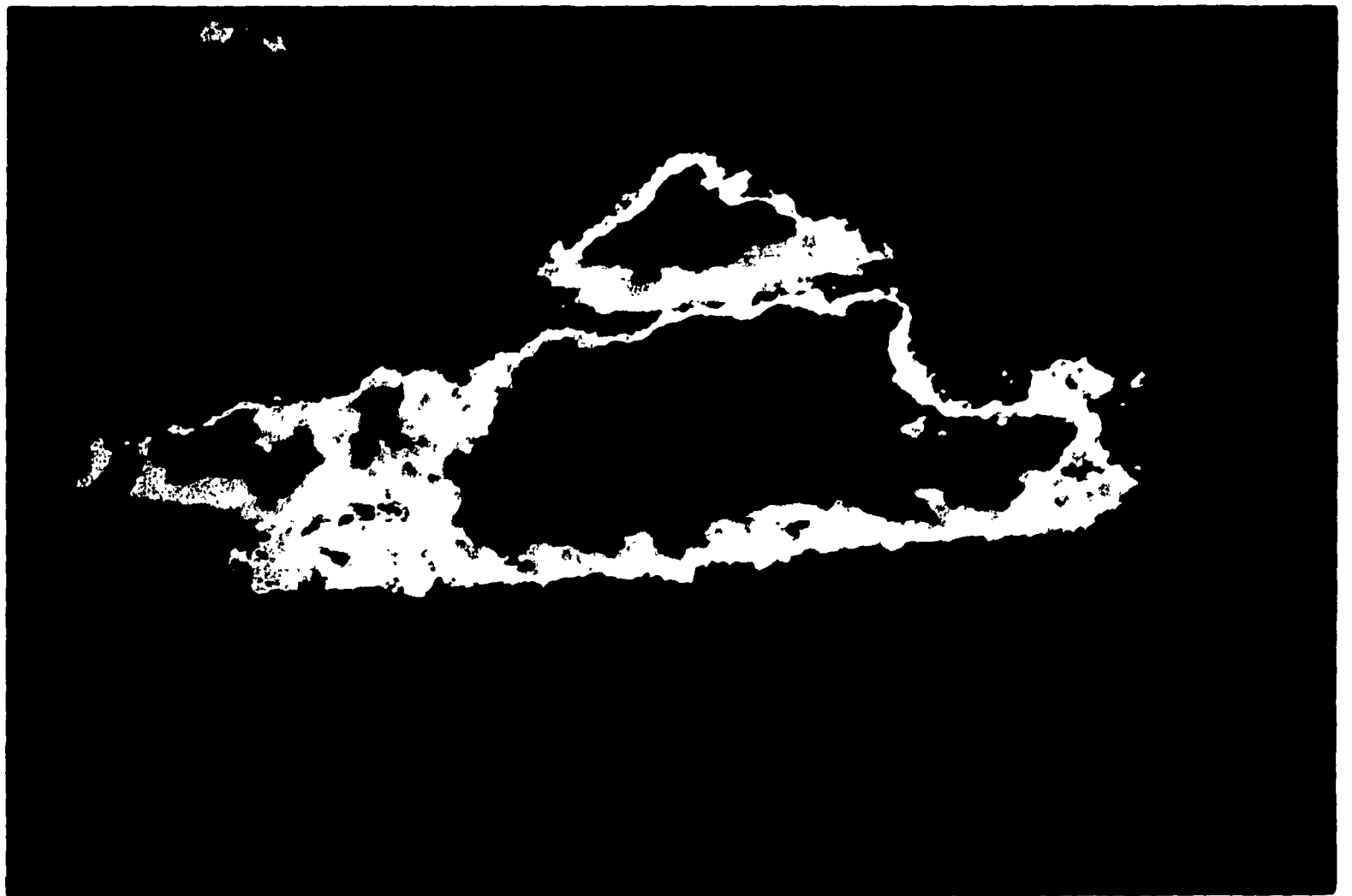
75¢

McLeod St. speed limit resurfaces

A subject that has been raised in the past, lowering the speed limit on McLeod Street from 25 mph to 15 mph, prompted most of the discussion during the Big Timber City Council meeting held Monday, December 1.

At the Council meeting held November 17 information given to members of the Council Police Committee, Councilmen Paul Westervelt and Phil Moulden, during a meeting held with Sweet Grass County Sheriff indicated Tronrud was under the impression new legislation enacted during the last Legislative session stated speed limits can now be lowered to 15 mph, rather than requiring they be no lower than 25 mph on state highways (which McLeod Street is).

At the November 17 Council meeting City/County Planner Betty Alexander was asked by the Council to write a letter to Bruce Barrett of the Montana Department of Transportation asking about the possibility of this change being made on McLeod Street.



When the clouds seem their darkest, and our hearts grow heavy with worry - there is always a silver lining, a door opening when one closes, and new possibilities with every day we are given.

(Photo by Richard Oberly)

"I am fed up with the bureaucrats telling us how to run our towns."

- Mayor Doug Lowry

Alexander advised the Council at Monday's meeting she had received a response from Barrett to her letter which stated past traffic studies do not warrant any changes

Continued on page 2

Ben Franklin franchise up for grabs

The announced closing of C and D Mercantile has many Big Timber residents wondering if another store will be opening to make up for the loss of a mainstreet business.

Recent advertisements in the Pioneer concerning a Ben Franklin franchise opportunity have given some hope this will be the case, and left others wondering what would be involved in undertaking such an endeavor.

According to David Larson, who is handling the transfer of the franchise now held by the C and D Mercantile owners, the

announcement that the franchise is available has generated several calls from potential investors.

Larson was asked Tuesday, December 2, what type of monetary investment would be required of someone looking to open a Ben Franklin store in Big Timber.

According to Larson, an investment of \$30,000 to \$40,000, or one third of the total franchise price, would be expected.

A person wishing to stay in the same location could do so, stated Larson, although the site is a rental and the building owner has been

approached by others interested in renting the property.

Larson says another site would be acceptable and is a real possibility with the number of vacant buildings in Big Timber at this time.

After 35 years in retail, what's next?

Craig Snodgrass, owner of C and D Mercantile, the current Ben Franklin franchise holder, was asked December 3 if he and his wife, Diane, have a new business endeavor in mind.

Snodgrass stated after 35 years in retail, the couple have had enough.

They will probably stay in Big Timber and find something to do part-time, although what is not clear at this time

Snodgrass also said they have a lot of really great customers they will really miss when the store closes for the last time.

Saturday, December 6, is tentatively scheduled to be the date this occurs, although Snodgrass says they will probably be physically in

Continued on page 11