

WE TELL YOU

nothing new when we state that it pays to engage in a permanent, most healthy and pleasant business, that returns a profit for every day's work. Such is the business we offer the working class. We teach them how to make money rapidly, and guarantee every one who follows our instructions faithfully the making of \$300.00 a month.

Every one who takes hold now and works will surely and speedily increase their earnings; there can be no question about it; others now at work are doing it, and you, reader, can do the same. This is the best paying business that you have ever had the chance to secure. You will make a grave mistake if you fail to give it a trial at once. If you grasp the situation, and act quickly, you will directly find yourself in a most prosperous business, at which you can surely make and save large sums of money. The results of only a few hours' work will often equal a week's wages. Whether you are old or young, man or woman, it makes no difference, — do as we tell you, and success will meet you at the very start. Neither experience or capital necessary. Those who work for us are rewarded. Why not write to-day for full particulars, free? E. C. ALLEN & CO., Box No. 420, Augusta, Me.

GEO. A. FRY & C.,

DEALERS IN

General Merchandise

BY U.M.,

CHOTEAU COUNTY, MONT.

Special Inducements Offered to
Ranch and Stockmen

GOOD HOTEL AND STABLES IN CONNECTION.

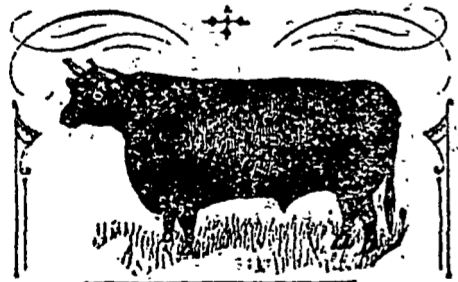
Call and get our prices.

THE CHOTEAU LAUNDRY

ED WIDMARK, PROPRIETOR.

WASHING & IRONING neatly done on short-notice and at reasonable prices. Give me a trial.

NEW BUTCHER



SHOP.

TRUCHOT AND
CRAWFORD,

PROPS.

MAIN STREET, CHOTEAU.

Commission Merchants,

AND

Dealers in ALL KINDS of Farm
PRODUCE.

DESERT LAND, FINAL PROOF NOTICE FOR PUBLICATION.

LAND OFFICE AT HELENA, MONT.,
Nov. 11, 1892.

Notice is hereby given that Charles G. Monkman, of Choteau, Montana, has filed notice of intention to make proof on his desert-land claim No. 2119, for the S $\frac{1}{2}$ sec. section 17, and N $\frac{1}{2}$ sec. section 12, Tp. 25 n, range 8 west, before A. C. Warner, U. S. Commissioner, at Choteau, Montana, on Saturday, the 31st day of December, 1892.

He names following witnesses to prove the complete irrigation and reclamation of said land: Samuel F. Ralston, Samuel F. Ralston, Jr., of Choteau, Mont.; Robert O. Cramer and Otto Miller, of Bynum.

S. A. SWIGGETT, Register.
First publication, Nov. 18.

NOTICE FOR PUBLICATION.

LAND OFFICE AT HELENA, MON.,
Oct. 19, 1892.

Notice is hereby given that the following named settler has filed notice of his intention to make final proof in support of his claim, and that said proof will be made before A. C. Warner, U. S. Commissioner, at Choteau, Montana, on December 5, 1892, viz:

SAMUEL T. KELLY,

who made homestead application No. 4932, for the S $\frac{1}{2}$ sec. section 31, Tp. 24 n, range 8 west.

He names the following witnesses to prove his continuous residence upon and cultivation of said land, viz: James Bullard, Samuel M. Young, Daniel J. Grant Joseph P. Waters, all of Choteau, Mont.

S. A. SWIGGETT, Register.
First publication Oct. 28th.

[COMMUTED.]

NOTICE FOR PUBLICATION.

LAND OFFICE AT HELENA, MON.,
Oct. 17, 1892.

Notice is hereby given that the following named settler has filed notice of his intention to make final proof in support of his claim, and that said proof will be made before A. C. Warner, U. S. Commissioner, at Choteau, Mont., on Dec. 2, 1892, viz:

THOMAS MCGOVERN,

who made homestead application No. 5162, for the S $\frac{1}{2}$ NW $\frac{1}{4}$ lots 2, 3 and 4, section 30, Tp. 26 n, range 4 west.

He names the following witnesses to prove his continuous residence upon and cultivation of said land, viz: John B. Mitchell, Jonathan D. Carney, Charles F. Carpenter and Jeremiah Kayton, all of Choteau, Montana.

S. A. SWIGGETT, Register.
[First publication Oct. 21.]

THE MONTANA WAGON AND CARRIAGE SHOP.

All kinds of wood work neatly,
safely and promptly done.

WHEEL REPAIRING A SPECIALTY.

J. E. WEBB.

CHOTEAU, MONT.

GRAND UNION HOTEL, CHAS. ROWE, PROPRIETOR. FORT BENTON, - - MONT.

HENRY'S PHARMACY.

THE NEW DRUG STORE,

CHOTEAU, MONT.

PURE DRUGS, PAT-
ENT MEDICINES,

FINE PERFUMES AND
TOILET ARTICLES.

EVERYTHING NEW AND FRESH.

COMPOUNDING

PRESCRIPTIONS

A Specialty.

A FULL LINE OF

General Merchandise,

AT

JOS. HIRSHBERG & CO.

Call and see us.

CHOTEAU, MONT.

THE CHOTEAU HOUSE

Wm. HODGSKISS Prop.

A FIRST-CLASS

STOPPING PLACE FOR
EVERYBODY.

GOOD FEED & LIVERY STABLE IN CONNECTION.
MAIN ST. CHOTEAU.

NEW GOODS AT

Silverman

& Cohen's

ONE PRICE

STORE.

Lumber, Lath, Shingles,
Tamarack Flooring, Siding,
Mouldings, Windows and
Doors. BUILDING PAPER.

Kept in stock at Choteau or laid down anywhere on the line of
the Great Falls & Canada R. R.

BUTTE & MONTANA COMMERCIAL
COMPANY.

J. E. WEBB, AGENT, CHOTEAU.