

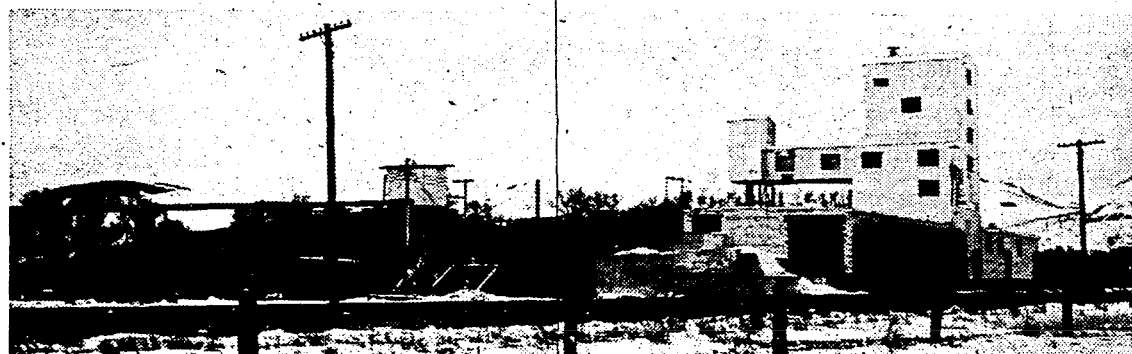
# The DILLON EXAMINER

Official County Newspaper Volume LXV—Number 31  
Dillon, Montana — Wednesday, February 1, 1956

## Tri-State Minerals Company's New Talc Plant



View of Tri-State's new talc mill and warehouse on Union Pacific Railroad siding near Barrett's Station, which went into production yesterday.



North side of mill showing old facilities formerly used. These structures are now obsolete and will be removed.

## TRI-STATE MINERALS NEW TALC MILL STARTED PRODUCTION YESTERDAY; OPERATIONS EXPAND

Beaverhead county's newest industry, the production of treated talc, started yesterday at Tri-State Minerals' new plant near Barrett's Station south of Dillon. When operations reach full capacity the new Raymond rolling mill will treat about 150 tons of crude talc daily for shipping. Some 20 men are employed now at the Are's Canyon mine and at the mill but the number will be substantially increased when op-

erations at the Stone Creek mine are resumed in the spring. The plant will continue to supply the Ogden mill with crude talc for treatment.

Mr. John Pyner, district manager of Tri-State, is here from Ogden as the plant begins production. Tri-State Minerals is a division of Southern California Minerals with headquarters in Los Angeles. Mr. Walter K. Skeoch of Los Angeles is the owner.

The plant here, which rises to the height of a six-story building, is of concrete and steel construction, and is electrically operated throughout. The Montana Power Company recently completed construction of a new transmission line from Dillon to the plant.

Ernest Nygren of Dillon is superintendent of over-all operations here and Edward Nettick of Dillon is the mill foreman.

The mill was installed under the supervision of Charles Richardson of Los Angeles, maintenance engineer at Hughes Aircraft, who is on loan to Tri-State. He supervised trial runs and is training the local crew in mill operations.

The former crushing plant and structures will be removed from the site in the clean-up operations.

At the modern plant, the talc ore trucked from the mine is

(Continued on page 8)

## Annual Ag Day to Be at Elks Hall Tues., February 21

The Beaverhead Soil Conservation District supervisors have set the date of their annual Agricultural Day for Tuesday, February 21 according to Art Christensen, chairman of the board of supervisors.

Arrangements have been made to hold the meeting at the Elks' Hall. Included in the program will be a film "Return to Eden," a Forest Service film which gives an excellent description of the need for conservation. Some excellent speakers have also been engaged for Agricultural Day.

A lunch will be served at noon for all cooperators and guests. This lunch will be sponsored by the machinery dealers in the county.

In conjunction with the Agricultural Day the "Marketeering Caravan" will have their display. This display is put by Montana State College to give the latest information on agricultural engineering and marketing.

## Treasurer of Beaverhead Unit, American Cancer Society, Reports \$131

Mrs. Marie Anderson, treasurer of the Beaverhead unit of the American Cancer Society, today made a financial statement for the unit from June 15, 1955—when the last report was rendered and the balance on hand remitted to the Society—through yesterday, January 31, 1956.

The amount on hand was \$131 which included a remittance of \$15 from Mrs. Walter Gnose of Wise River, and \$116.00 received since June 15 as memorials to the following deceased residents of Beaverhead and Silver Boy counties, with Dillon the place of residence unless otherwise noted:

Mrs. Nellie McFadden, Mrs. Anna Mautz, Mrs. Annie Samal, Wise River; Margaret Ann Willey, Wisdom; J. Fred Woodside, Roscoe C. McLaughlin, J. C. Wedum, Harold M. Warner, Otto K. Boetticher, Melrose; and Roy E. Murray, Sr., Butte.

## Beaverhead Wool Meeting Feb. 8 In New Vo-Ag Shop

The annual meeting of the Beaverhead Wool Pool will be held at the new Vocational Agriculture shop in Dillon starting at 10 a.m. on Wednesday, February 8, according to Harry Andrus, president of the board of directors.

The program will start out with a tagging demonstration and discussion of preparation of wool. A lunch will be served at noon.

Reports will be given by the president, treasurer and secretary. Jim Drummond, head of the Montana Wool Laboratories, will discuss the individual grading of the Pool. And Everett Shuey, secretary of the Montana Wool Growers Association, will tell the group of the wool support program.

Anyone interested in the program is invited to attend. The F.F.A. boys from the Beaverhead Chapter will help with the arrangements for the meeting.

## W. W. HAWKINS ATTENDS ANNUAL BANK MEETING HELD IN MINNEAPOLIS

W. W. Hawkins, president of the First National Bank of Dillon was in Minneapolis last week to attend the Northwest Bancorporation annual group conference of affiliated banks and companies Thursday and Friday, January 26 and 27, at the Leamington Hotel.

In attendance were managing officers, and other senior officers from the various affiliates in the seven-state area of Minnesota, Iowa, North Dakota, South Dakota, Nebraska, Montana and Wisconsin.

The affiliates' successful record for the year 1955 was reviewed and a thorough appraisal of the prospects for 1956 were considered.

The conference included business meetings at the Leamington Hotel, with a dinner at the Minneapolis Club given by Northwest Bancorporation on Thursday. Friday the group concluded their business session at noon and travelled to St. Paul for a tour through the newly remodeled Empire National Bank, an affiliate of Northwest Bancorporation. The two-day session closed with luncheon at the Minnesota Club in St. Paul on Friday.

## Square Dance Festival At College Gym on March 10 Being Planned

The Square Dance Festival sponsored each year by the Beaverhead County Farm Bureau will take place again this year in the gymnasium at Western College on Saturday evening, March 10, at 7:30 p.m.

Calls for the dances are being mailed to all schools, 4-H clubs and other youth and adult groups, besides the Farm Bureau units. All interested people are asked to

(Continued on page 8)

## B C of C Activities in State and County Brought out at Well Attended Annual Dinner Thursday

A large attendance at the annual dinner of the Beaverhead Chamber of Commerce last Thursday night at the Elks lodge heard past and future activities of the Chamber outlined at the state, county and city level. Among the speakers introduced by Lt. Gov. George M. Gosman, were William Browning, president of the Montana Chamber of Commerce, Helena; President Dan Carpita of the Beaverhead

Chamber; Past President Frank Lasich; City Water Commissioner Bert Megquier, representing Mayor Phillip J. Lovell; and State Representative George Glead. Recent Past Presidents of the Chamber included George Andersen, Don Wheat, Herb Wheat, and Frank Hazelbaker.

Introduced as present members of the Board of Directors were Carpita, Leonard Mashino, Bruce Watters, Dave Williams, W. B. Tobey, Howard Puyear, Clark D'Evelyn and Lou Larsen. Retiring members were Lasich, Tom McGovern, Bruce Risley and Don Berger. Mrs. Marie Gibbons was introduced as the new secretary of the Chamber.

Manager Browning told of activities at the state level to promote Montana's industrial growth and also to increase the volume of state tourist business, now a major industry which last year brought some \$90 million to the state. He pointed out the need for coordinating local and state efforts in reaching objectives and said that such teamwork is of vital importance if maximum results are to be obtained.

He pointed out the different mediums through which Montana is being advertised—illustrated folders, movies, articles by outdoor writers in national magazines, and newspaper, magazine and radio advertising. Colored

(Please Turn to Page 5)

## Government Will Provide Marker On Ridings Grave

Harry S. Ridings, World War I veteran who died in Dillon last May 9, was rightfully identified under that name, army serial number and service record, according to word received Monday by James McCashin, Butte, service officer in this district for the Veterans Welfare Commission.

The prior death of another man in Texas under the identical name, army serial number, and war service record, had produced a mystery that baffled at least three government agencies in determining which man was the true Ridings. Harry S. Ridings had been known in and around Dillon since 1933 and his effects at the time of his death contained his original army discharge.

McCashin in his routine procedure of checking on veterans to secure any government benefits to which they may be entitled, made application for a government marker for the grave of the man who died here. He was astonished to learn from the office of the Quartermaster General that a marker had already been supplied for a veteran who died in a government hospital in Texas under the identical name and serial number—the same birthdate and place, in fact.

In the course of following up all leads to establish the identity of the Dillon man as the true

(Continued on page 8)

## Prohosky Looks Over Prairie Route with Engr.

County Commissioner John Prohosky last week accompanied State Highway Engineer Lou Chittam of Butte, and district maintenance Supervisor C. L. Fitzsimmons of Dillon on a trip through parts of the lower Horse Prairie to view an additional 9-mile segment on the present Armstead to Salmon, Idaho, route.

Previous sections of the highway already constructed, start at the Idaho line and include a segment of slightly over five miles graded by the U. S. Forest Service, and a connecting link of 15 miles constructed by the state as secondary highway. This brings the present 20 miles of highway within a mile and one-half of Grant.

The additional segment of nine miles viewed last Thursday by the party will, when the road is constructed, bring the route close to the Skelton or Metlen ranch. This temporarily terminates the route outside of the reservoir site of the Clarke's Canyon Dam, according to Bureau of Reclamation surveys.

From this terminal point, Commissioner Prohosky said it will be possible when the final link is built to skirt the reservoir to connect with U.S. Highway 91, or extend it to Armstead if the reservoir project is not carried out.

Prohosky said that Engineer Chittam plans to have a crew survey and stake the 9-mile extension within a few days.

## Rotarians Told of \$400,000 Program at WMCE

Norman Stubbs of Western College told Dillon Rotarians Monday night that a loan of \$400,000 has been applied for to finance construction of a building program at the college which embraces apartments for married students, a men's dormitory and a student union building.

Steve Foster, on the editorial staff of the high school year book, The Beaver, explained the plan for financing the elaborate publication by advertisements and "page sponsors." He said that the cost of publishing the annual would be about \$1,600.

George Schotte of Butte appeared as a booster for the mining city's new ball park to house its Copper Sox team in the Pioneer League this year. He asked for support of Dillon fans as "in the old days" in supporting the league. Bob O'Regan also discussed the project and said that the lighting plant for the new park has already arrived. He said that the plant as planned will cost in the neighborhood of \$200,000.

## THE WEEK'S WEATHER

Winter clamped a tighter hold on the Dillon area during the week and sub-zero weather occurred nightly and lasted well into the day at the week ending Tuesday (yesterday). Tuesday morning brought reported low readings at Wisdom, -41, Armstead, -31, among the coldest spots but Bannack came through with the lowest of all, -54. Since today was markedly colder than yesterday, it seems fair to assume that Bannack may have recorded at least a -60.

At the weather station at Western College, records kept by observer Osborne showed a total precipitation for the month of .51 inch. At 2 o'clock this afternoon the Union Pacific station thermometer registered four above.

Date	Day	H	L	P
Jan. 25	Wednesday	18	-3	—
Jan. 26	Thursday	12	-6	—
Jan. 27	Friday	26	-3	—
Jan. 28	Saturday	24	-4	T
Jan. 29	Sunday	17	0	T
Jan. 30	Monday	12	-13	—
Jan. 31	Tuesday	6	-18	—

Average for Week 16 -7  
Precipitation for January, .51